



NORDIC FASTENING GROUP AB

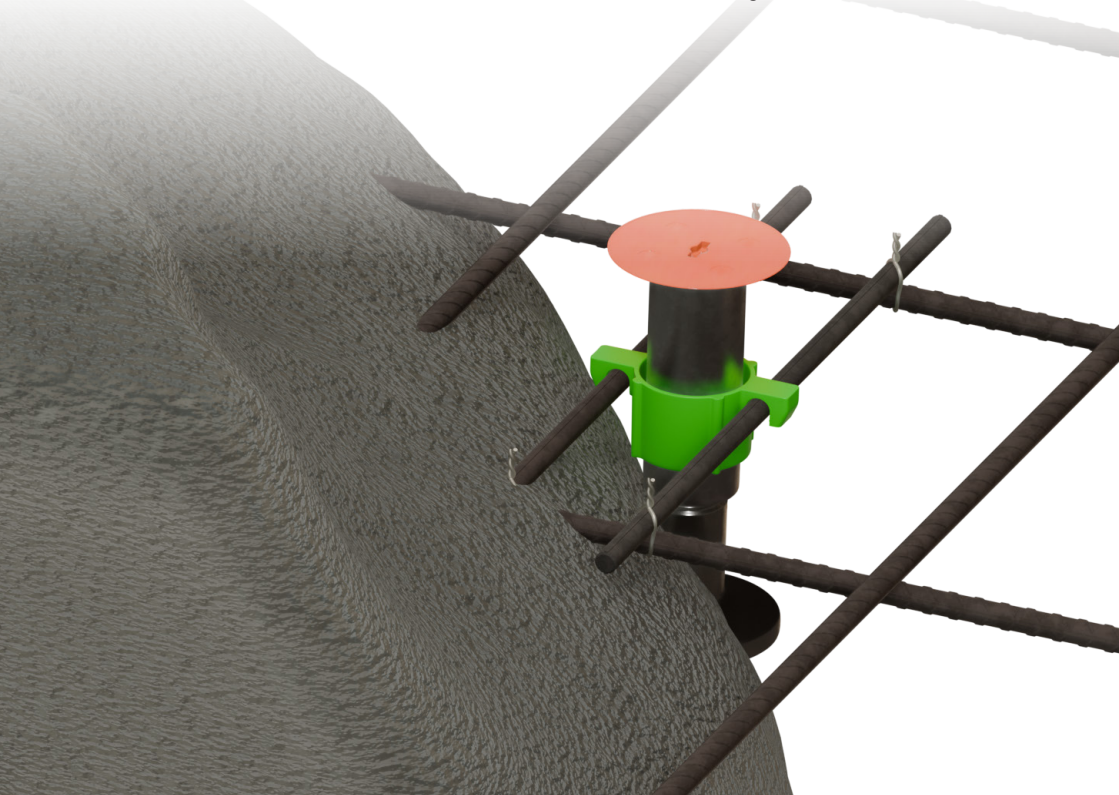
Level Support HUSSE

Developed in collaboration with Hussein Al Lafta, innovator



HUSSE is an entirely new product that solves an old problem. Say goodbye to the days of anchor being dipped into curing concrete after the fact—ending up tilted, missing, misplaced, poorly embedded, or even completely forgotten. With the Level Support HUSSE, you can effortlessly ensure that anchor are cast straight and at the correct height—every single time. A product as simple as it is ingenious, available in M12 and M16, and compatible with most brands and screw fittings on the market.

- Increased safety
- Time-efficient
- Cost-effective
- Eliminates rework
- Adjustable in both height and lateral position
- Improved accuracy
- Immediate installation – no waiting time

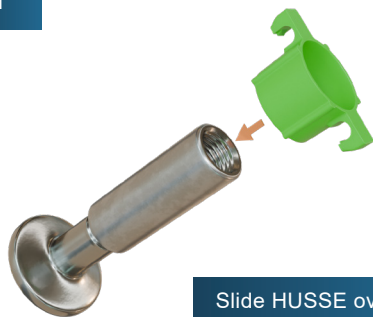




NORDIC FASTENING GROUP AB

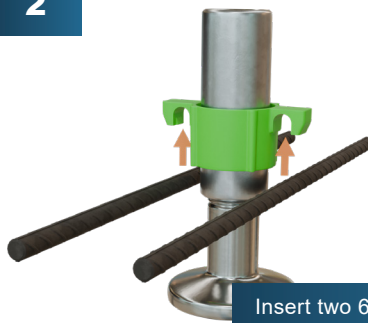
HUSSE - MANUAL

1



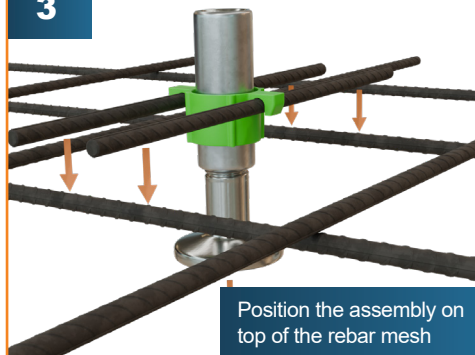
Slide HUSSE over the NEO-BTK

2



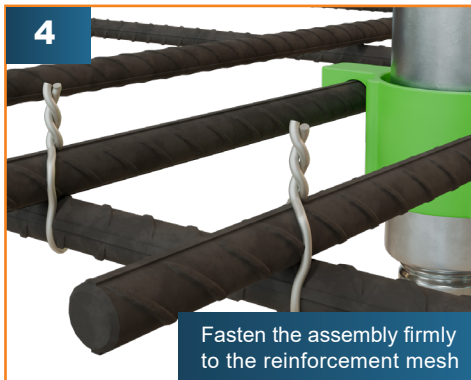
Insert two 6 mm rebars into the clips

3



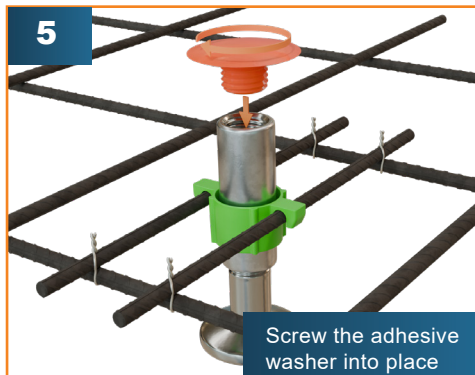
Position the assembly on top of the rebar mesh

4



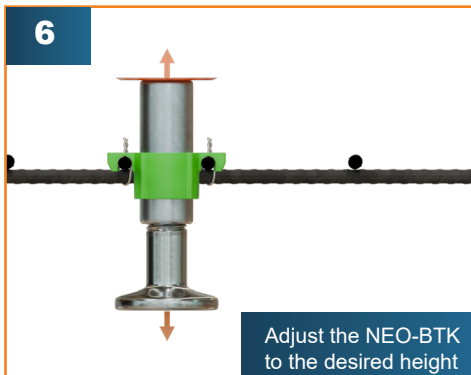
Fasten the assembly firmly to the reinforcement mesh

5



Screw the adhesive washer into place

6



Adjust the NEO-BTK to the desired height